



## **Solis P and PX Floor Mat System Installation Instructions**

Thank you for purchasing our floor mat system. You'll notice that we do not pre-install any of the required snap fasteners, however, we do include them—along with the required tools—for you to install yourself. We do this NOT to save time on our end, but rather to ensure that all of your snaps line up perfectly, thus improving the quality of the installation. You'll get a better idea as to why after watching our tutorial video (QR code link below).

**Tools needed:** Drill, Phillips screwdriver bit, Hammer, Snap Fasteners and Installation Tools (included).

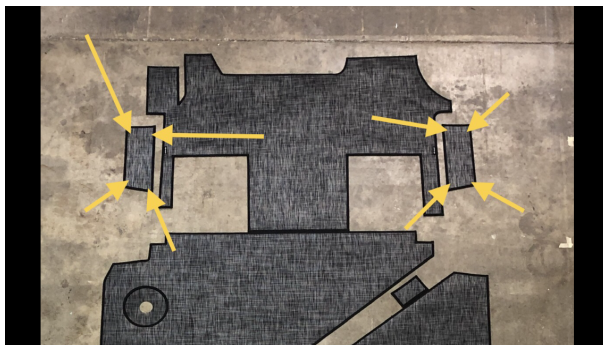
### **Instructional Video:**

Open your phone's camera app, then hold the phone over this QR code (as if you are taking a photo of it). A link to the video should show up on your phone's screen – tap the link. This video illustrates the snap installation technique for front side steps only, but the process is the same for all other areas.

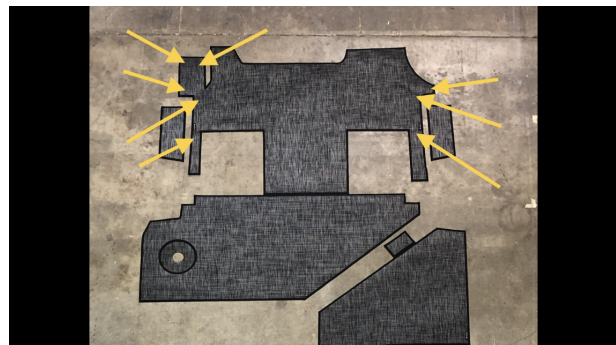


### **Snap Locations:**

The following photos illustrate the locations where snaps are highly recommended to secure your mats in place.

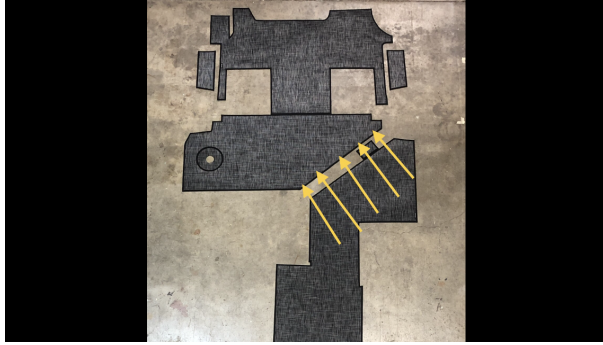


Side Steps (4 snaps in each)

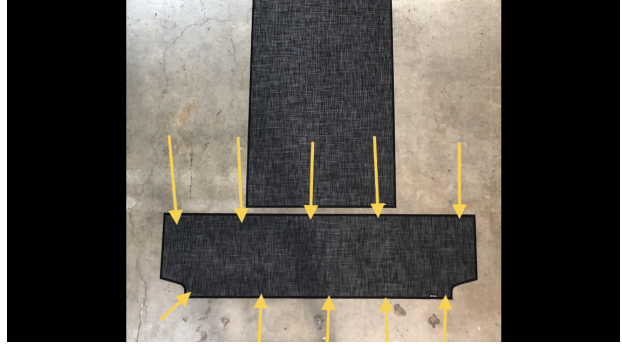


Front Mats (5 Driver Side, 3 Passenger Side)

Continued on Reverse...



Dinette Step (5 along leading edge)



PX Cargo Area (4 - 10)



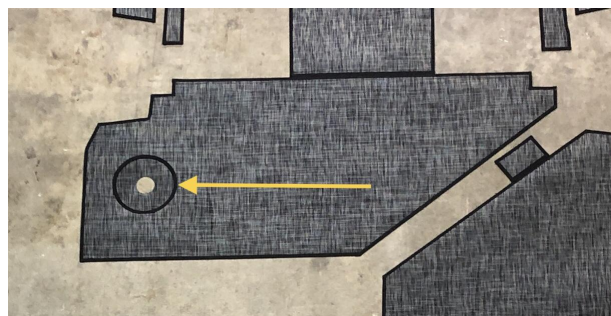
Solis P Drivers Side Rear (2)



Solis P Passenger Side Rear (2)

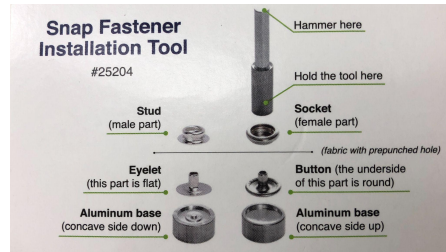
### **Round “Doughnut” Piece:**

We have found a large variation from Solis to Solis where the dinette table mount is located. To compensate for this, we’ve included a “doughnut-shaped” filler piece that can be installed underneath the dinette mat and over the table mount. The piece is secured only using the table leg itself.



“Doughnut-shaped” piece

## Snap Installation:



(Snap Fastener Terminology)

### Step 1:

Place the mat in position and hold firmly in place. Verify that each of your proposed snap locations will permit the screw-in snap fasteners to sit completely flat by lifting the corners of the mat and examining each potential location. You may need to adjust the mat a little to the right, left, forward or backward to find a location that will permit all of the screw-in snap fasteners to sit flush with the side step.



### Step 2:

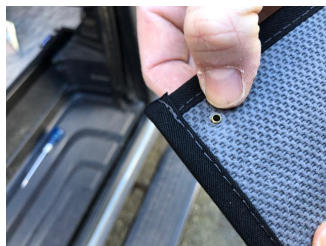


While holding your mat in place with one hand, use your other hand to drill the screw-in fasteners directly through the top of your mat and into the plastic side step. This will create the holes in the mat that you'll use to install the snap fastener buttons, and it will also create the holes in the plastic side step that you will use to locate the screw-in snap fasteners.



### Step 3:

Remove all screws from the mat. Remove the mat and set it aside. Next, reinstall the screws in the locations that you just removed them from (minus the mat of course!). **Caution!!!: DO NOT Overtighten these Screws! Doing so will strip the holes.**

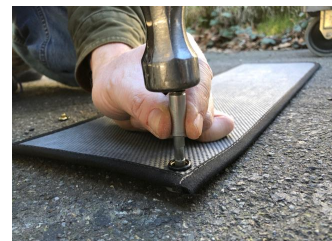


### Step 4:

Push the snap buttons through the holes in the mat that were created by the screws. Next, flip the mat over and place it on a hard surface such as a concrete or asphalt driveway. **NOTE: The finish on the top of the caps can scratch, so we recommend placing something such as a towel between the mat and the hard surface.**

### Step 5:

Next, place the smooth concave side of the dime-shaped installation tool facing up on the hard surface (**Do NOT use the side of the tool containing**



**a raised nipple in the middle).** Cradle the snap button head in the concave portion of the dime-shaped tool and place a snap socket on top of the snap button stem that is sticking through the mat. Place the 2 inch long metal tool into the snap socket and tap the tool using a hammer to secure the snap button and snap socket together. Repeat this process on the remaining 3 snaps in the mat.



Inhabit Design Works is an American-owned and operated business based in Portland, Oregon. We pride ourselves on producing top-notch, high-quality products that are made using materials that are made in the U.S.A. [InhabitDesignWorks.com](http://InhabitDesignWorks.com)